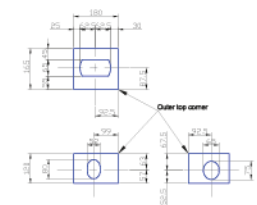
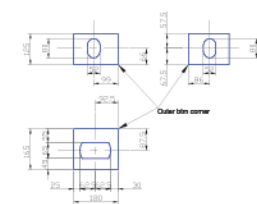


PLAN

15 thk Closure Plates welded between toes on two end panels only (4 No. total). 8 fillet weld all round.



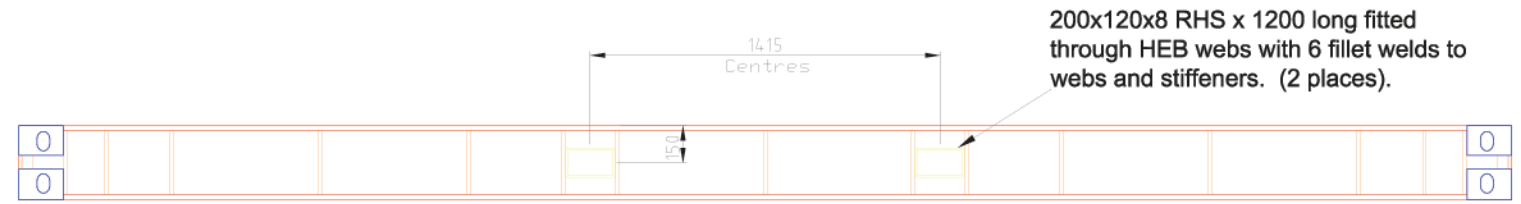
Upper Left Box Detail



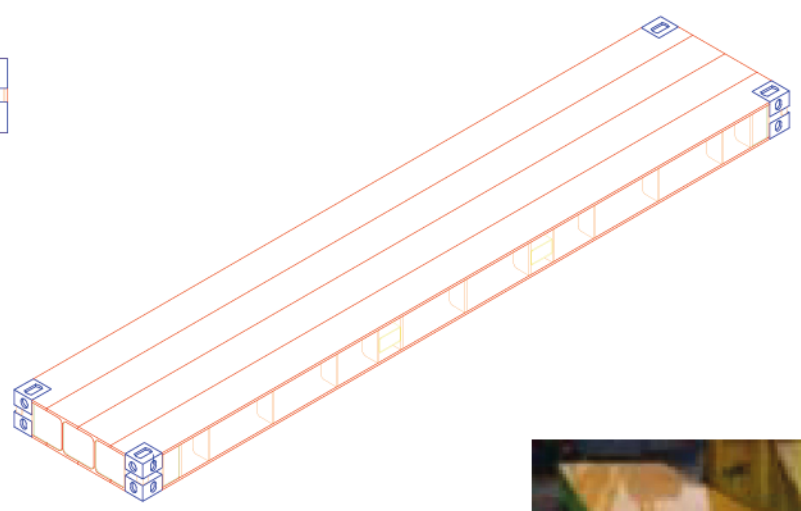
Lower Left Box Detail

GENERAL NOTES

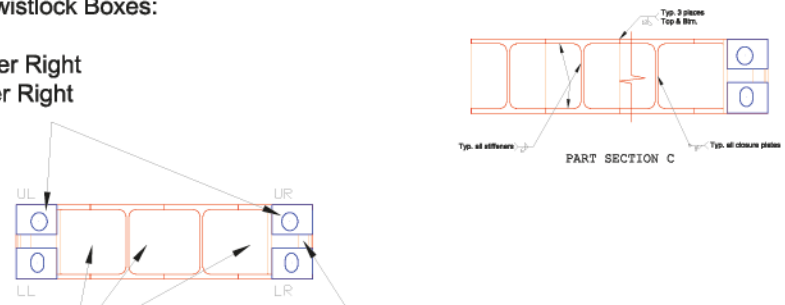
- 1) All dimensions in millimetres UNO.
- 2) Material to be high yield steel with a minimum yield strength of 355N/mm<sup>2</sup>.
- 3) Sections to be HEB300 and 15mm plate UNO.
- 4) Proprietary Container Twistlock Boxes to be fitted using full penetration butt welds.
- 5) Container Box welds to be 100% MPI tested. All other welds to be 25% MPI tested.
- 6) Completed mats to be shot blasted and finished with matt green primer paint to NCS code 0875-G29Y.



SECTION A



Proprietary Container Twistlock Boxes:  
(8 No. total).  
UL: Upper left; UR: Upper Right  
LL: Lower left; LR: Lower Right  
See note 4.



15 thk Closure Plates welded between flanges at both ends (6 No. total). 8 fillet weld all round.

50x50x8 Angle between Boxes. (4 No. total) 6 fillet weld.

SECTION B

