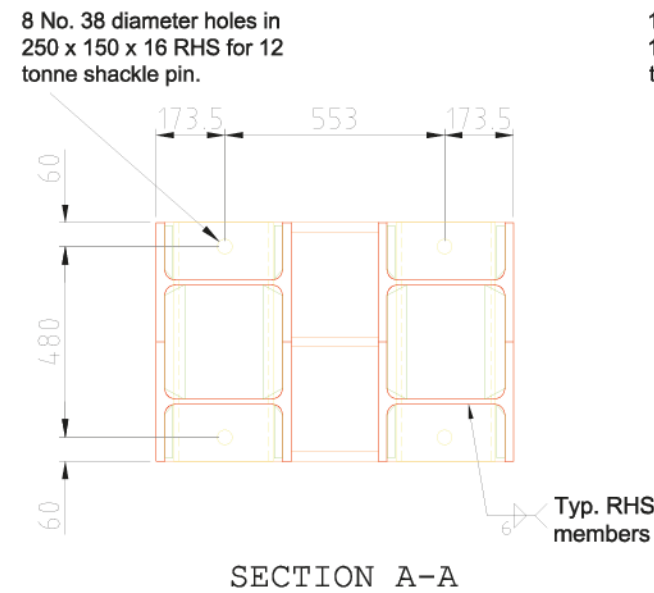
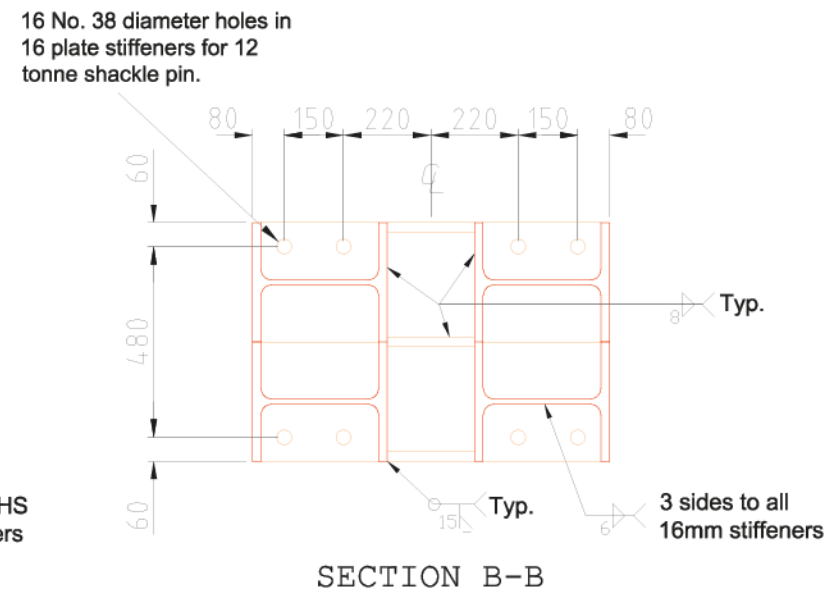


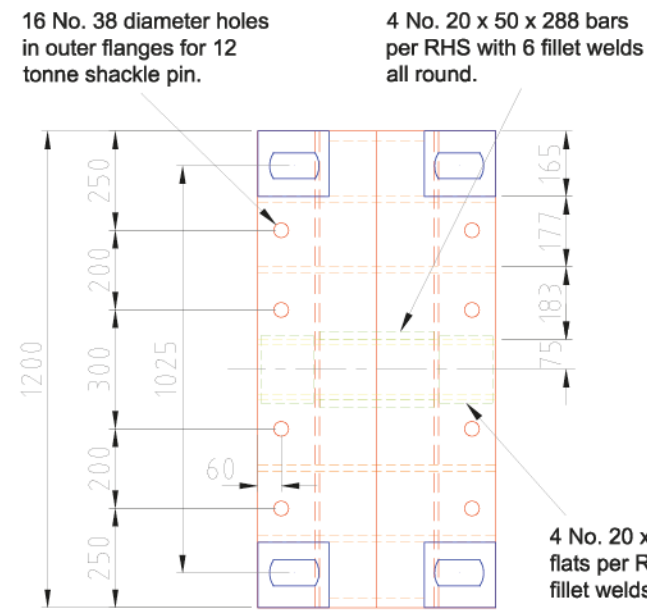
PLAN



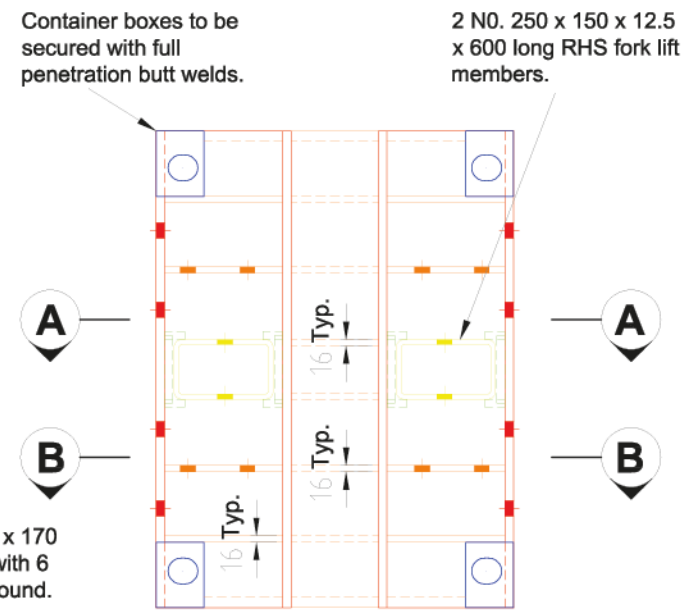
SECTION A-A



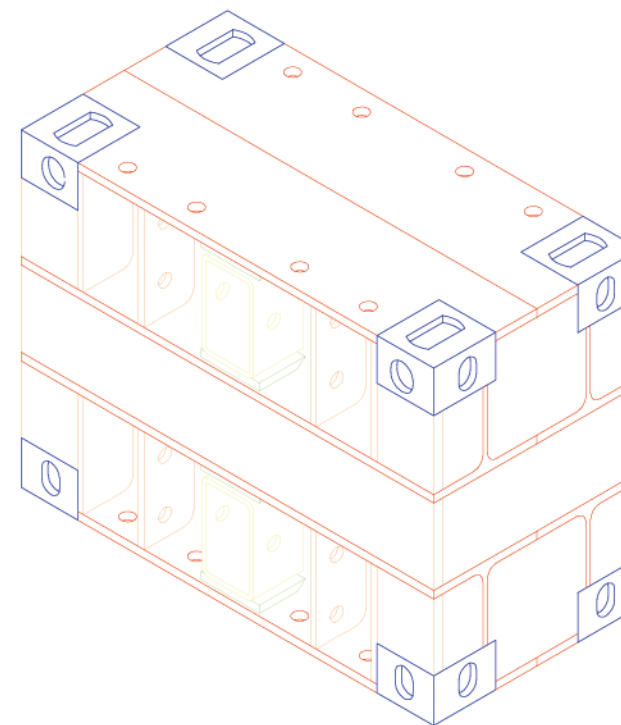
SECTION B-B



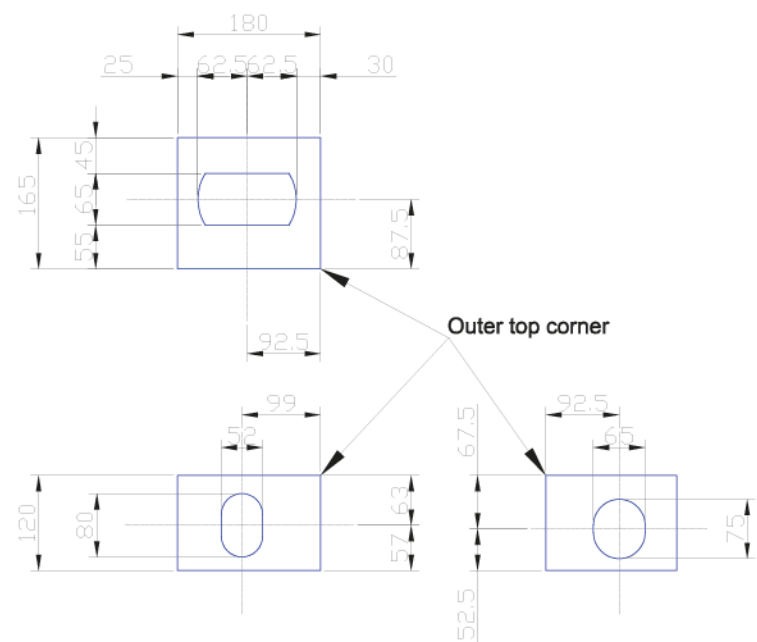
END VIEW



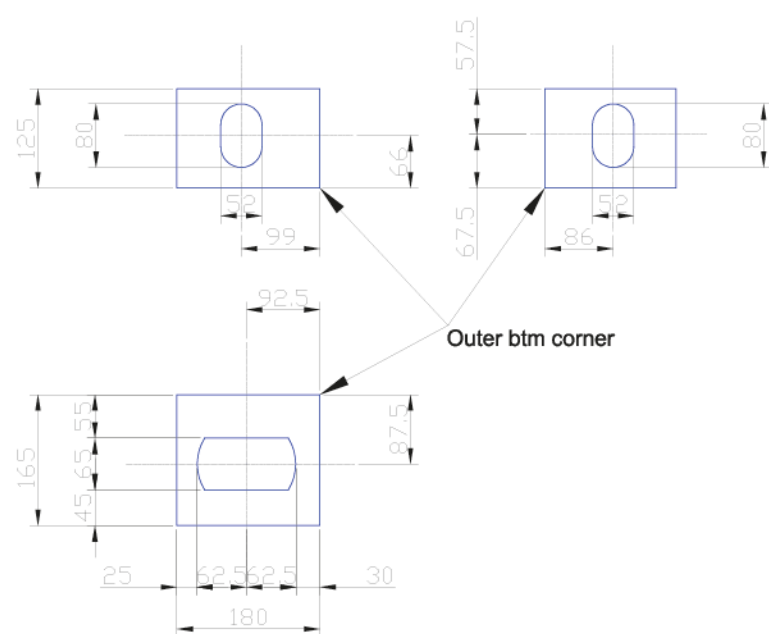
SIDE VIEW



ISOMETRIC



Upper Left Box Detail
Upper Right Opp. Hand



Lower Left Box Detail
Lower Right Opp. Hand

GENERAL NOTES

- 1) All dimensions in millimetres UNO.
- 2) Material to be high yield steel with a minimum yield strength of 355N/mm².
- 3) Sections to utilise 4 No. HEB340. All end closure plates 25mm, all other stiffeners 16mm.
- 4) Proprietary Container Twistlock Boxes to be fitted using full penetration butt welds.
- 5) Container Box welds to be 100% MPI tested. All other welds to be 25% MPI tested.
- 6) Completed stools to be shot blasted and finished with matt green primer paint to NCS code 0875-G29Y.



PATENTS PENDING

No part of this document may be reproduced, stored, distributed or transmitted by any means, electronically or otherwise, without the prior written authorisation of SPS Ltd.

REV.	REASON FOR ISSUE	DATE	BY	CHKD
02	As Built Drawing	22/06/11	SJB	
01	Issued for comment	27/10/10	SJB	

<p>SPS SHIPPING PROJECT SERVICES</p>	<p>SCALE:</p> <p>1:20, 1:10</p>
	<p>FORMAT:</p> <p>A3</p>
<p>TITLE:</p> <p>UNISTOOL</p>	
<p>DRAWING No:</p> <p>SPS-UNI-01</p>	<p>REV:</p> <p>02</p>