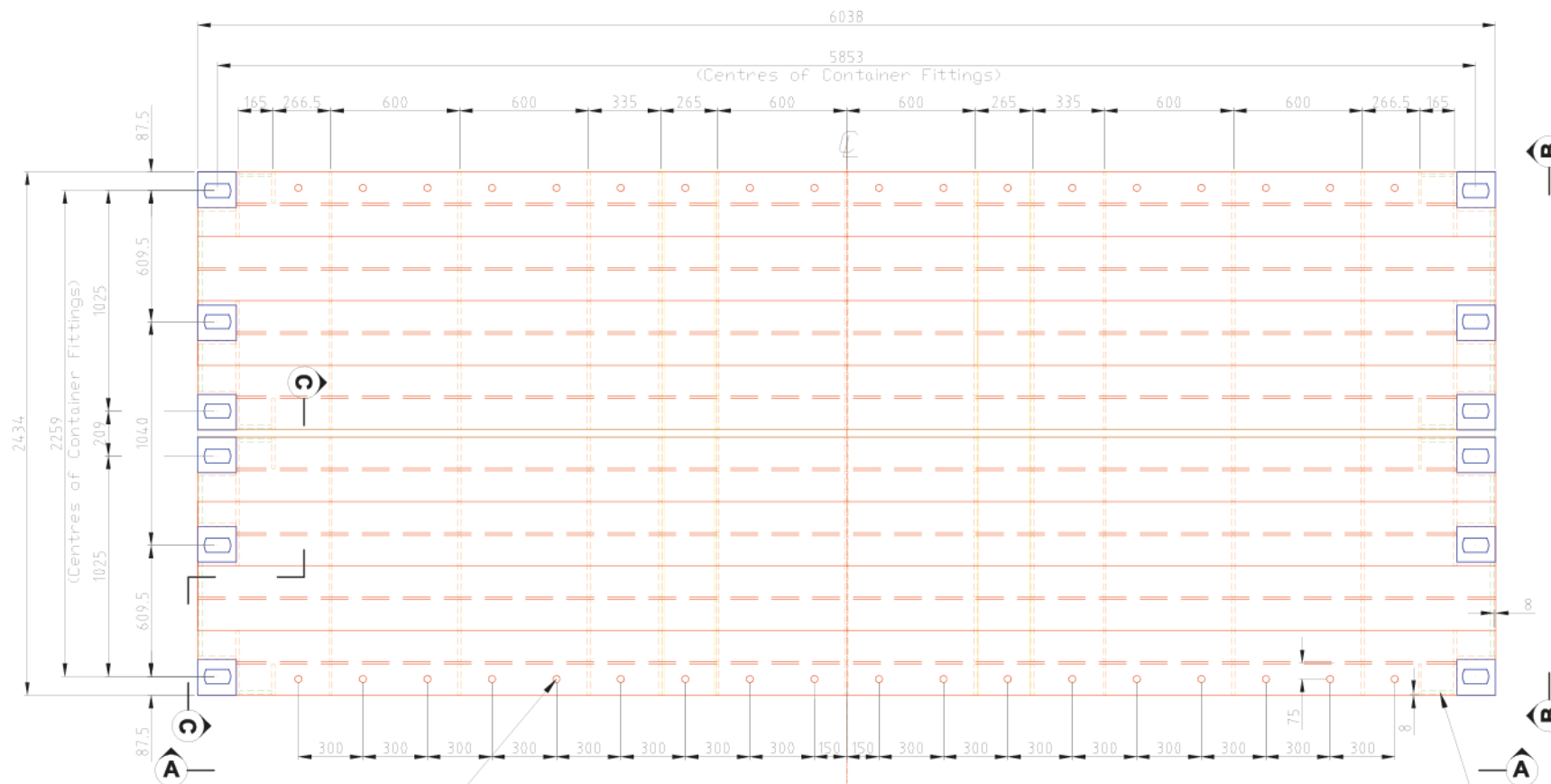


GENERAL NOTES

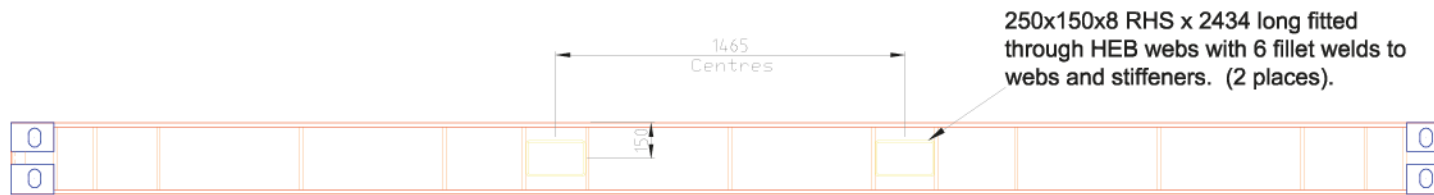
- 1) All dimensions in millimetres UNO.
- 2) Material to be high yield steel with a minimum yield strength of 355N/mm².
- 3) Sections to be HEB300 and 15mm plate UNO.
- 4) Proprietary Container Twistlock Boxes to be fitted using full penetration butt welds.
- 5) Container Box welds to be 100% MPI tested. All other welds to be 25% MPI tested.
- 6) Completed mats to be shot blasted and finished with matt green primer paint to NCS code 0875-G29Y.



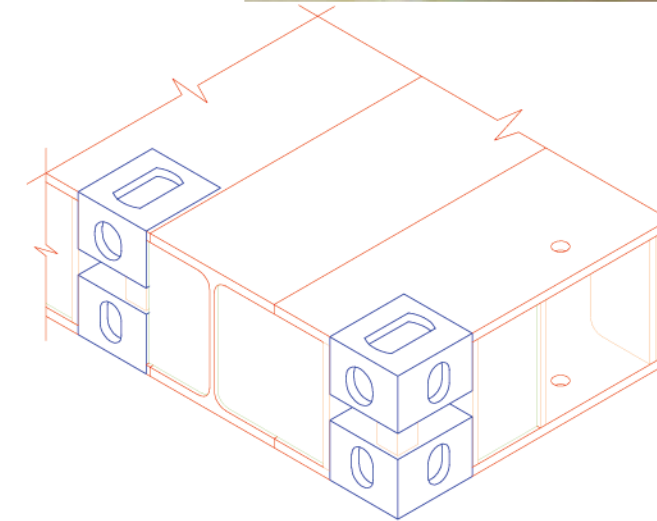
18 No. 33 diameter holes in outer flanges, top and btm, for M30 bolts. (4 x 18 = 72 No. total).

PLAN

15 thk Closure Plates welded between toes on two end panels only (8 No. total). 8 fillet weld all round.

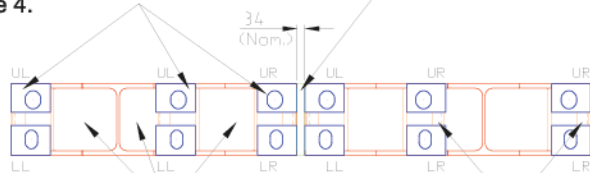


SECTION A



ISOMETRIC VIEW

Proprietary Container Twistlock Boxes: (24 No. total).
 UL: Upper left; UR: Upper Right
 LL: Lower left; LR: Lower Right
 See note 4.

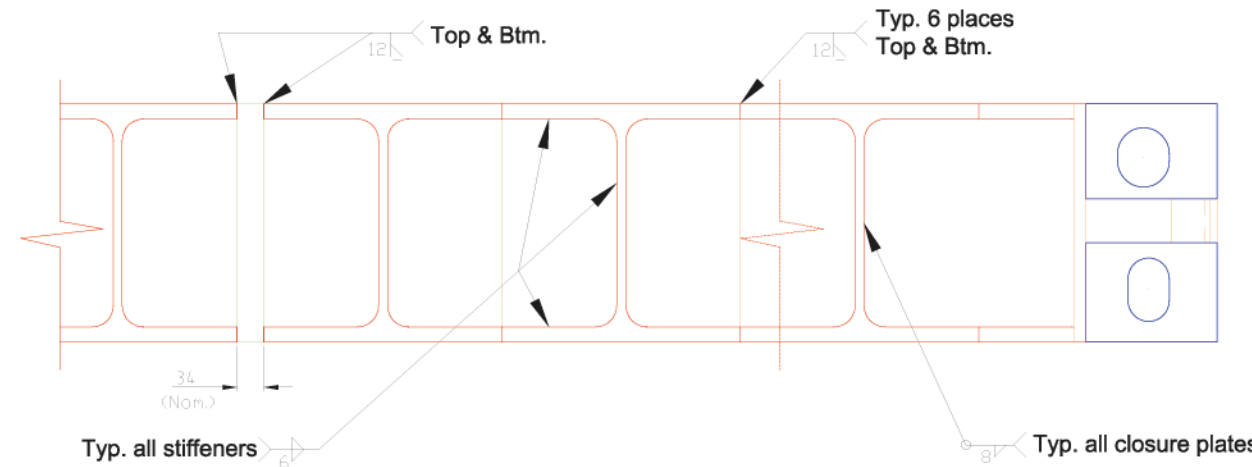


15 thk Closure Plates welded between flanges at both ends (12 No. total). 8 fillet weld all round.

300 x 6038 long plate welded between flange toes.

50x50x8 Angle between Boxes. (12 No. total) 6 fillet weld.

SECTION B



PART SECTION C

PATENTS PENDING

No part of this document may be reproduced, stored, distributed or transmitted by any means, electronically or otherwise, without the prior written authorisation of SPS Ltd.

REV.	REASON FOR ISSUE	DATE	BY	CHKD
01	Issued for comment	01/01/09	SJB	

SCALES:
1:33, 1:10
FORMAT: A3

TITLE:
GRILLAGE MATS : TYPE 2

DRAWING No: **SPS-GM2-01** REV: **01**